



900mm / 1100mm / 1300mm Wide Belt Sanders

Single or Twin belt configurations available



Sanderson Machinery

With decades of experience and a commitment to excellence, Sanderson Machinery has continually pushed the boundaries of sanding technology, delivering cutting-edge machinery that optimizes productivity while ensuring impeccable finishing results. Our wide belt sanders are designed to enhance efficiency, streamline workflow, and elevate the overall quality of your woodworking projects.



Markfield Woodworking Machinery Ltd, Unit H,
Cedar Court, Bardon Hill, Leicestershire, LE67 1TU



Incorporating a wide belt sander into your workshop offers numerous advantages, including superior surface finishing, increased productivity, versatility, improved workflow integration, and long-term cost savings. By harnessing the power of this advanced sanding technology, you can elevate the quality of your woodworking projects, streamline operations, and gain a competitive edge in the industry.



Dual Drum Motors

Amp Meter Load-Sensing System

Powered table Elevation

Micro-Adjustable Graphite/ Felt Platen

Variable Conveyor Feed Speeds From 7 – 68 FPM

Digital Readout Accurate to Within 0.005"

Superior Surface Finishing: A wide belt sander excels at producing smooth and uniform surfaces on various types of wood and other materials. Its large sanding belt offers a wide coverage area, allowing for efficient material removal and exceptional finish quality. With consistent sanding pressure and precise belt tracking, you can achieve professional-grade results that enhance the aesthetics and value of your finished products.

Increased Productivity: Manual sanding can be a time-consuming and labour-intensive process. By incorporating a wide belt sander into your workflow, you can significantly boost productivity. These machines are designed for efficient material removal, enabling you to sand larger workpieces or multiple smaller pieces in a fraction of the time. The automation and advanced features of modern wide belt sanders streamline the sanding process, reducing manual effort and maximizing output.

Versatility and Adaptability: Wide belt sanders are incredibly versatile, capable of handling a wide range of materials, thicknesses, and surface requirements. Whether you're working with solid wood, veneers, laminates, or composite materials, a wide belt sander can accommodate different materials and deliver consistent results across the board. Additionally, adjustable feed rates, sanding pressures, and belt grit options allow you to adapt the machine's settings to meet specific sanding needs, ensuring optimal performance and versatility.



Improved Workflow Integration: Integrating a wide belt sander into your workshop can enhance the overall workflow and increase efficiency. By eliminating the need for manual sanding or reliance on external service providers, you gain greater control over your production process. The availability of various feed systems, including conveyor belt systems, ensures smooth material handling and seamless integration with other woodworking machinery, such as planers or jointers.

Cost Savings and Return on Investment: While the initial investment in a wide belt sander may seem significant, the long-term benefits and cost savings can quickly outweigh the expense. By reducing labour costs, minimizing material waste, and increasing throughput, a wide belt sander helps optimize resource utilization and improve overall efficiency. The improved surface quality and consistency can also lead to higher customer satisfaction, repeat business, and increased profitability.

Due in September

Sanderson WDE-1-900 Wide Belt Sander

Single Sanding Head

Main Motor	15HP/15HP	Feed Motor	1HP
Lift Motor w/digital readout	0.25HP	Contact Drum Diameter	220mm or 125mm
Combi Roller diameter	125mm	Pad width	45mm
Roller Type	Pad	Size of Sanding Belt	940mm X 1905mm
Double Pressure Rollers	Installed	Pad Width	45mm

Additional Features Installed on this Machine.

2x Steel Infeed Rollers
2x Steel Outfeed Rollers
Double Pressure Rollers
Plexi Glass with LED lights (Left Side)
Air Jet Cleaner

Available From £14,400 +vat

Ex Works Leicester



Single Sanding Head installed with Roller – Pad configuration.

Sanderson WDE-2-900 Wide Belt Sander

Double Sanding Head

Main Motor	15HP/15HP	Feed Motor	2HP
Lift Motor w/digital readout	0.25HP	Contact Drum Diameter	220mm
Combi Roller diameter	125mm	Pad width	45mm
Roller Type	Pad	Size of Sanding Belt	940mm X 1905mm
Double Pressure Rollers	Installed	Pad Width	45mm

Additional Features Installed on this Machine.

2x Steel Infeed Rollers

2x Steel Outfeed Rollers

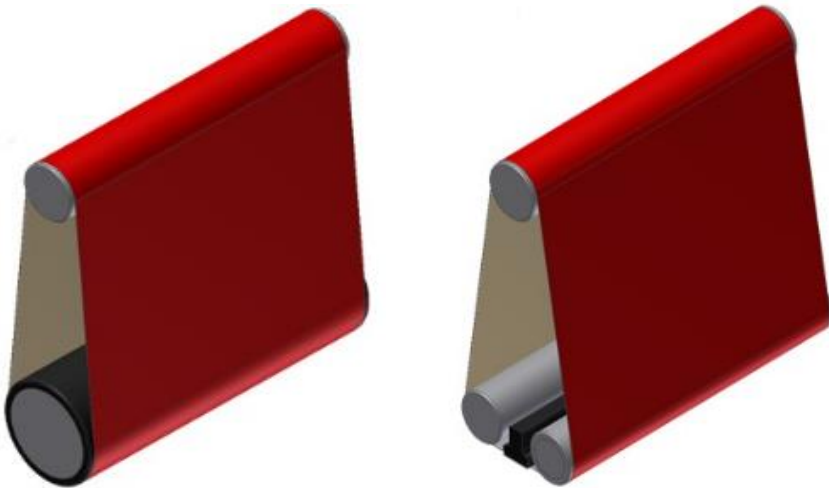
Double Pressure Rollers

Plexi Glass with LED lights (Left Side)

Air Jet Cleaner

Available From £17,350 +vat

Ex Works Leicester



Twin Sanding Heads installed on the WDE-2 Series.

Due in September

Sanderson WDE-2-1100 Wide Belt Sander

Double Sanding Head

Main Motor	15HP/15HP	Feed Motor	2HP
Lift Motor w/digital readout	0.25HP	Contact Drum Diameter	220mm
Combi Roller diameter	125mm	Pad width	45mm
Roller Type	Pad	Size of Sanding Belt	1100mm X 1905mm
Double Pressure Rollers	Installed	Pad Width	45mm

Additional Features Installed on this Machine.

2x Steel Infeed Rollers

2x Steel Outfeed Rollers

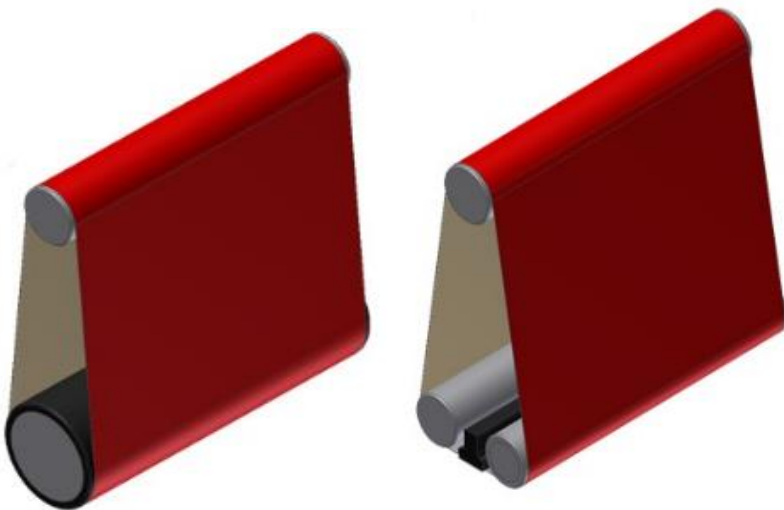
Double Pressure Rollers

Plexi Glass with LED lights (Left Side)

Air Jet Cleaner

Available From £22,900 +vat

Ex Works Leicester



Twin Sanding Heads installed on the WDE-2 Series.

Sanderson WDE-2-1300 Wide Belt Sander

Double Sanding Head

Main Motor	15HP/15HP	Feed Motor	2HP
Lift Motor w/digital readout	0.25HP	Contact Drum Diameter	220mm
Combi Roller diameter	125mm	Pad width	45mm
Roller Type	Pad	Size of Sanding Belt	1300mm X 1905mm
Double Pressure Rollers	Installed	Pad Width	45mm

Additional Features Installed on this Machine.

2x Steel Infeed Rollers

2x Steel Outfeed Rollers

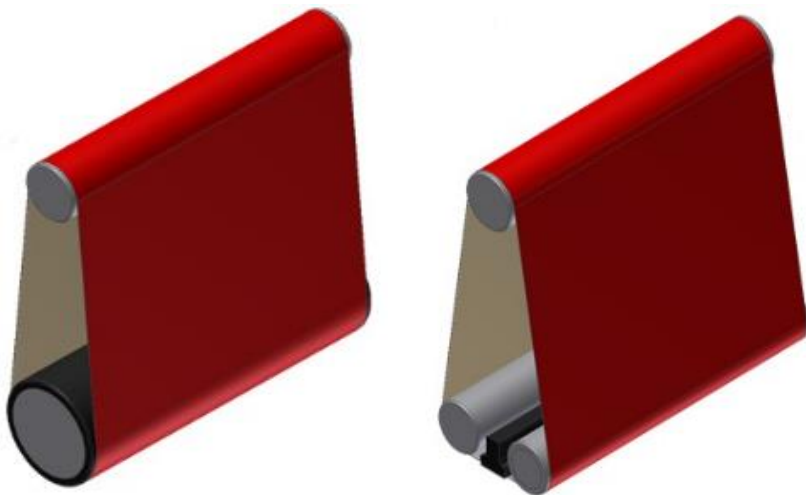
Double Pressure Rollers

Plexi Glass with LED lights (Left Side)

Air Jet Cleaner

Available From £26,500 +vat

Ex Works Leicester



Twin Sanding Heads installed on the WDE-2 Series.

General Specifications

Motor Power	15HP – 25HP	Phase	415V / 3 Phase
Full Load Current	40.5A	Min Circuit Size	50A
Feed Motor Power	1HP - 2HP	Number of Sanding Heads	1 or 2 Heads
Max Board Width	900mm – 1300mm	Min Board Width	50mm
Max Board thickness	152mm	Min Board thickness	5mm
Min Board Length	304mm	Sandpaper speed	Front 3600 FPM Rear 2800 FPM
Conveyor Feed Rate	7 – 68 F/PM	Sandpaper Length	1905mm
Sandpaper Width	940mm / 1100mm / 1300mm	Infeed Sanding drum type	Spiral Grooved Rubber Roller
Infeed Sanding drum Size	Front 220mm, Rear 127mm	Outfeed Sanding Drum type	Steel
Outfeed Sanding Drum Size	127mm	Floor to table height	812mm
Sanding belt tension	Pneumatic	Belt Tracking	Pneumatic
Number of pressure rollers	6	Pressure roller type	Rubber
Conveyor table length	1123.95	Conveyor Belt Length	2997mm
Conveyor belt Width	927mm	Air requirement	57 – 75 PSI
Extraction outlets	5x 125mm		

Extraction Requirements

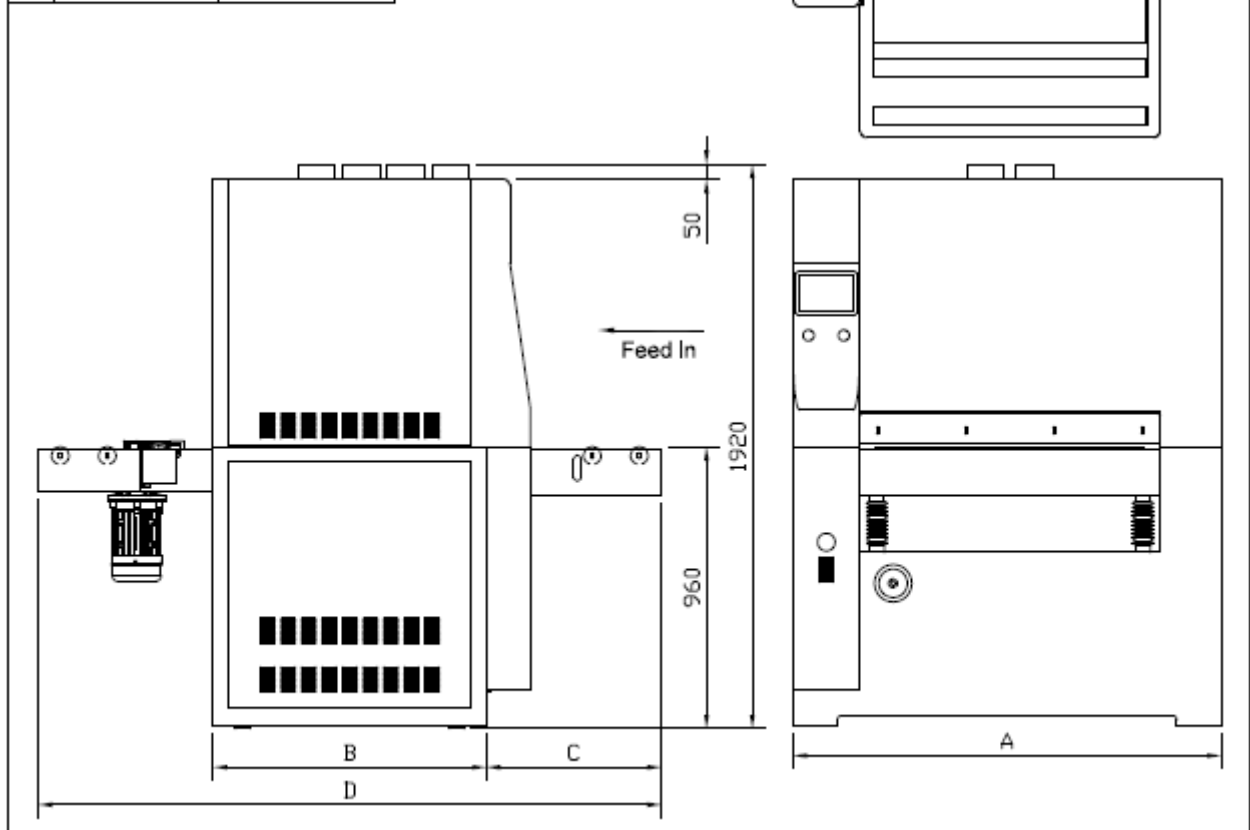
This machine has 5x 120mm Extraction outlets situated on the top of the machine.

These outlets have a total airflow requirement of 6,000 m3/hr.

Floor Plan

	WDE-900	WDE-2900
A	1455	1455
B	560	930
C	605	595
D	1770	2120
E	455	825
F	3	6

	WDE-2110	WDE-2130
A	1635	1835
B	930	930
C	595	595
D	2120	2120
E	825	825
F	8	8



Machinery Quotation

Our machinery is not supplied with electrical cabling, extraction hose or blades. Unless stated otherwise in your quotation below.

Please make sure you have adequate HGV access to your workshop to unload this machine via Crane Lorry.

Machinery to be electronically connected before commissioning date.

Your Offer

New Sanderson WDE-1-900 Wide Belt Sander	£0
Delivery Via Crane Lorry	£0
Commissioning (Excluding Electrical Connection)	£0
Total	£0
VAT	£0
Total Payable	£0

Payment terms:

20% Deposit

80% balance prior to delivery

Banking Details: Markfield Woodworking Machinery Ltd

HSBC Bank plc, 1 Forge Corner Enderby, Road Blaby, Leicester, LE8 4FZ.

Sort Code: 40-12-35

Account Number: 81093673