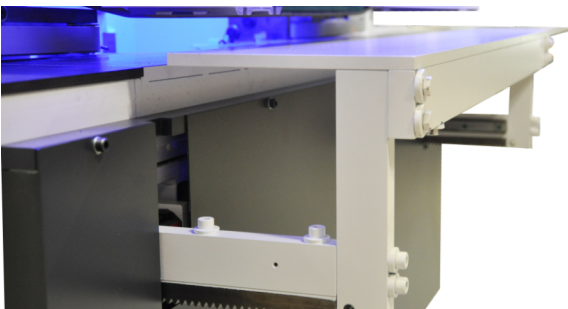
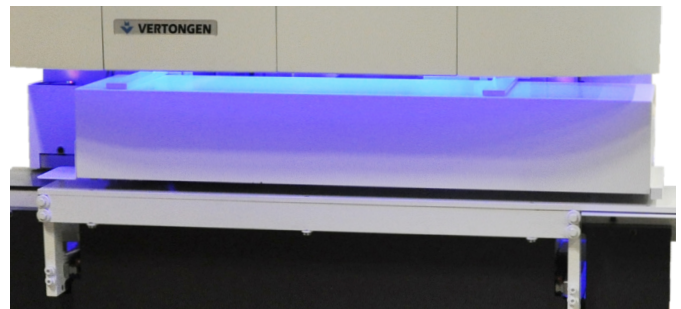


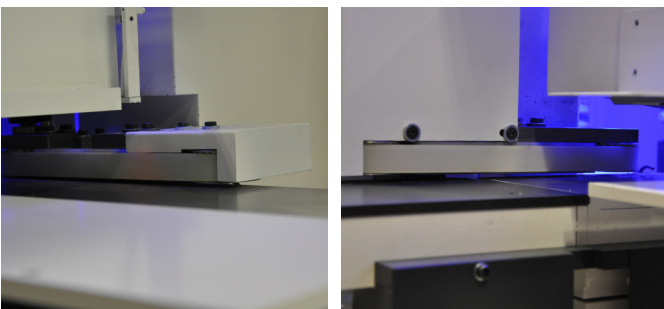
The Profil Compact Kitchen is a fully CNC-controlled moulder with one vertical spindle. Many varieties of kitchen cabinet door profile "stickings" can be machined without manual set-up between different profiles. The vertical spindle has a length of 300 mm, uniquely engineered for stacking tools. The solid steel table and cutout for the vertical spindle profile contribute to exact accuracy. Combining the Pentho with the Profil Kitchen allows for the complete production of kitchen cabinet door frames.



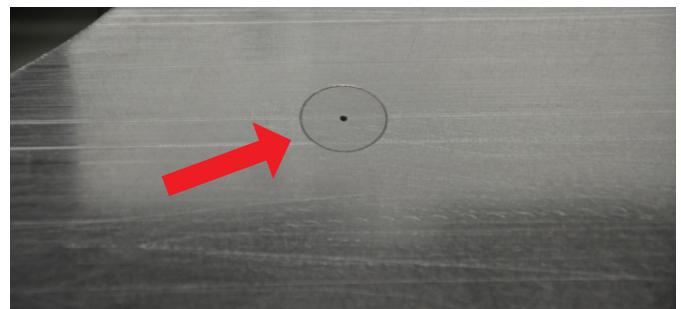
The automatic outside fence allows the operator to change-over in a short time between parts of different widths.



The belt feeding device can transport parts with a minimum length of 100mm / 4"



The infeed-unit aligns the workpiece accurately under the main belt while the outfeed-unit delivers finished parts to the operator.



Air nozzles in the steel table create an air cushion between the workpiece and the machine surface for better through-feed.

## TECHNICAL DESCRIPTION

### Vertical Spindle 1

Motor:	7.5 kW (10HP) – 6000 RPM@50Hz / 7200 RPM@60Hz
Suspension:	Dove tail
Positioning:	Vertical cnc-positioned, horizontal Fix
Turning direction:	Counter clockwise
Spindle:	300 mm with Prolock, Ø 50 mm
Tool:	Min Ø 160 mm; max. 240 mm
Extraction:	180 mm diameter

### Table

Guiding:	Outside fence cnc-positioned
System:	Through feed

### Feed Device

Speed:	Adjustable between 2 – 12 m/min
Feeding type:	Top belt, minimum part length 100 mm / 4"
Part height:	Min. 15 mm / 0.6" - Max. 50 mm / 1.96" with max. oversize: 0.1 mm / 0.004"
Part width:	Min. 38 mm / 1.5" - Max. 230 mm / 9"
Max. profile depth:	19 mm / 0.75"
Part tolerance in height:	Maximum 0.1 mm / 0.004"
Part oversize in width:	Between 0.00 and 1.58 mm / 0.0625"

### Chassis

Safety specification:	CE
Dimensions:	2300 x 1380 x 1800 mm ( L x W x H ) / Weight: 1200 kg (2650 lbs)
Total extraction:	1 x Ø 180 mm

### Controller

10" touch screen at eye level  
All motors are started via control panel  
Memory for saving programs for easy call-up and repeatability  
Programming via Teach-in command for creation of new profiles

### Power / Electrics / Compressed air

400V 3 phase + Neutral + Ground / Amperage: 20A (@ 400V)  
Transformer included with machine for customers voltage (230V, 460V or 480V)  
Electrical cabinet CE-Certified or CSA/UL-Certified  
Compressed air : 1000NL/min; 6 bar